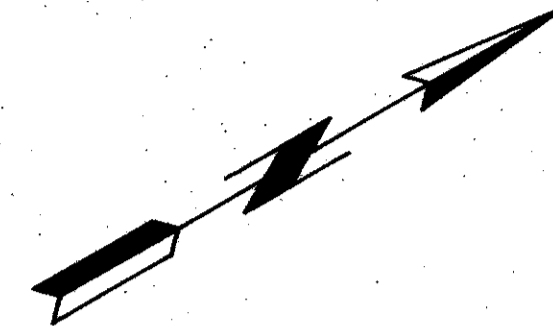


JONATHAN'S ISLAND AT JONATHAN'S LANDING P. U. D.

BEING A REPLAT OF PARCEL *Y* OF JONATHAN'S LANDING PLAT EIGHT P. U. D. AS RECORDED
 IN PLAT BOOK 48, PAGES 88 THROUGH 91, INCLUSIVE, OF THE PUBLIC RECORDS OF PALM BEACH COUNTY, FLORIDA
 IN PART OF SECTION 7, TOWNSHIP 41 SOUTH, RANGE 43 EAST
 PALM BEACH COUNTY, FLORIDA
 IN TWO SHEETS SHEET NO. 2

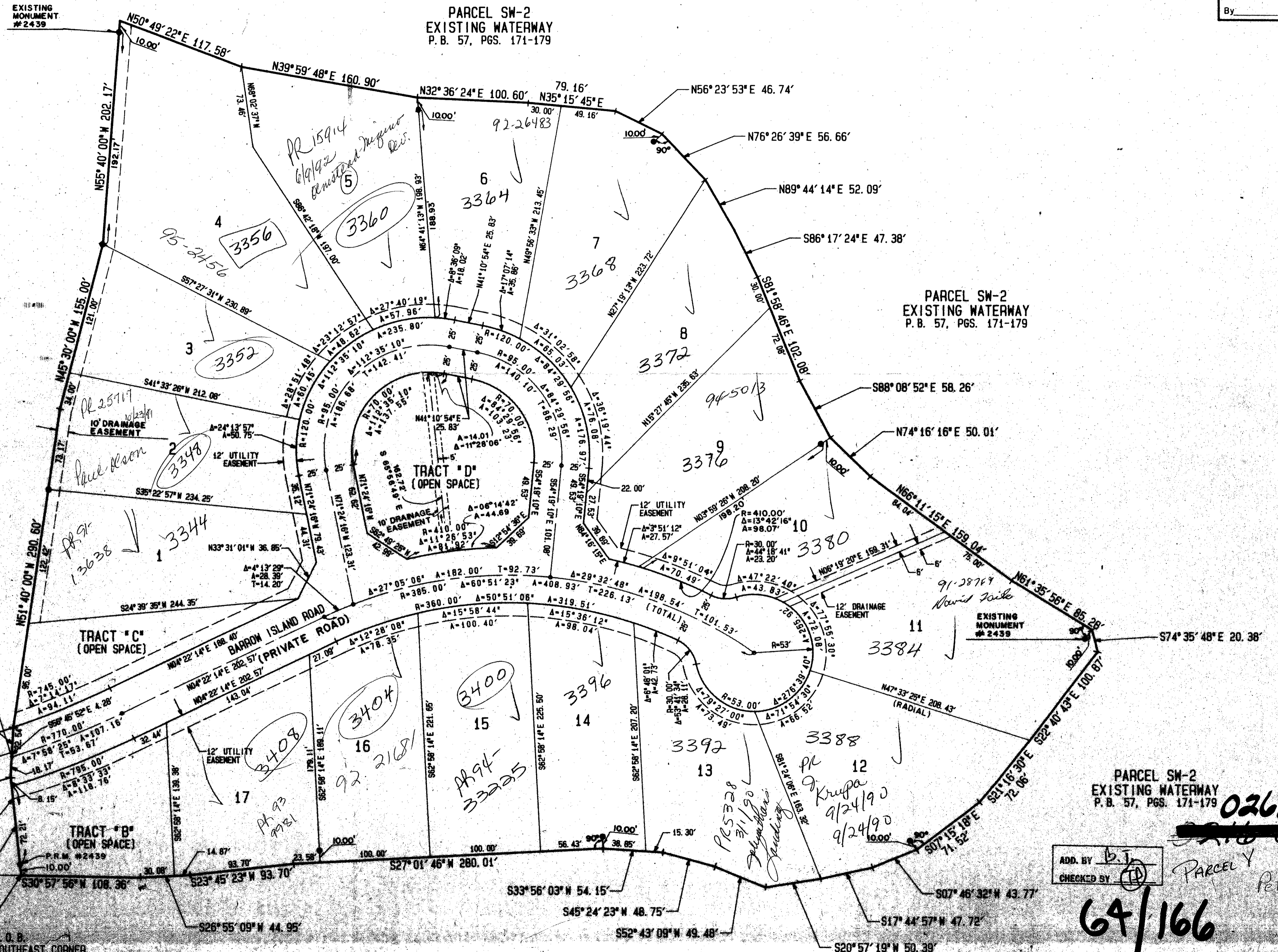
GEE & JENSON
 ENGINEERS - ARCHITECTS - PLANNERS, INC.
 WEST PALM BEACH, FLORIDA
 MAY 1989



STATE OF FLORIDA
 COUNTY OF PALM BEACH
 This plat was filed for
 record at _____ M. this _____ day
 of _____ 1989, and duly
 recorded in Plat Book No. _____
 on Pages _____ thru _____
 JOHN B. DUNKLE
 Clerk Circuit Court
 By _____ D. C.

166

261-317



SUBDIVISION - JONATHAN'S ISLAND
 BOOK 64 PAGE 14
 FLOOD ZONE G FLOOD MAP #1045
 QUAD # II ZONING R4
 SE 74-19S ZIP CODE 33458
 P.U.D. NAME JONATHAN'S LANDING, P.U.D.

COMPUTED D. BACHOR
 DRAWN D. BACHOR
 CHECKED JTB
 APPROVED JTB
 REVISION

ADD. BY [Signature]
 CHECKED BY [Signature]
 PARCEL Y
 0261-317
 64/166
 PR 79-230
 RM PUP

JONATHAN'S ISLAND AT JONATHAN'S LANDING